
Perpetual Superannuation Limited

Perpetual's Select Superannuation Fund Annual Members' Meeting

7 March 2024

Trust is earned.

Perpetual 



General information

This information has been prepared by Perpetual Superannuation Limited ABN 84 008 416 831 (PSL), AFSL 225246, RSE L0003315 (as trustee for Perpetual's Select Superannuation Fund ABN 51 068 260 563, RSE R1057034). It is general information only and is not intended to provide you with financial advice or take into account your objectives, financial situation or needs. You should consider, with a financial adviser, whether the information is suitable for your circumstances. To the extent permitted by law, no liability is accepted for any loss or damage as a result of any reliance on this information.

This presentation contains information that is based on projected and/or estimated expectations, assumptions or outcomes. Forward looking statements are subject to a range of risk factors. PSL cautions against reliance on any forward-looking statements.

While PSL has prepared this information based on its current knowledge and understanding and in good faith, there are risks and uncertainties involved which cause results to differ from projections. PSL will not be liable for the correctness and/or accuracy of the information, nor any differences between the information provided and actual outcomes and reserves the right to change its projections from time to time. PSL undertakes no obligation to update any forward-looking statement to reflect events or circumstances after the date of this presentation, subject to disclosure obligations under the applicable law.

The product disclosure statements (PDSs) for the Perpetual Select Super Plan and Pension Plan, issued by PSL, should be considered before deciding whether to acquire or hold units in the Fund. The PDSs and Target Market Determinations can be obtained by calling 1800 003 001 or visiting our website www.perpetual.com.au.

Any views expressed in this presentation are the opinions of the presenter as at the date of this meeting and do not constitute a recommendation to act. Any views expressed are subject to change at any time.

No company in the Perpetual Group (Perpetual Group means Perpetual Limited ABN 86 000 431 827 and its subsidiaries) guarantees the performance of any fund or the return of an investor's capital. Past performance is not indicative of future performance.

Net returns shown are for the Super Plan and have been calculated net of fees, costs and income tax of up to 15%. No allowance has been made for any fee rebates.

Janet Torney

Chair

Acknowledgement of Country and Introduction to Key People

Trust is earned.

Perpetual 

Agenda

Acknowledgement of Country

Introduction to key people

Chair's address

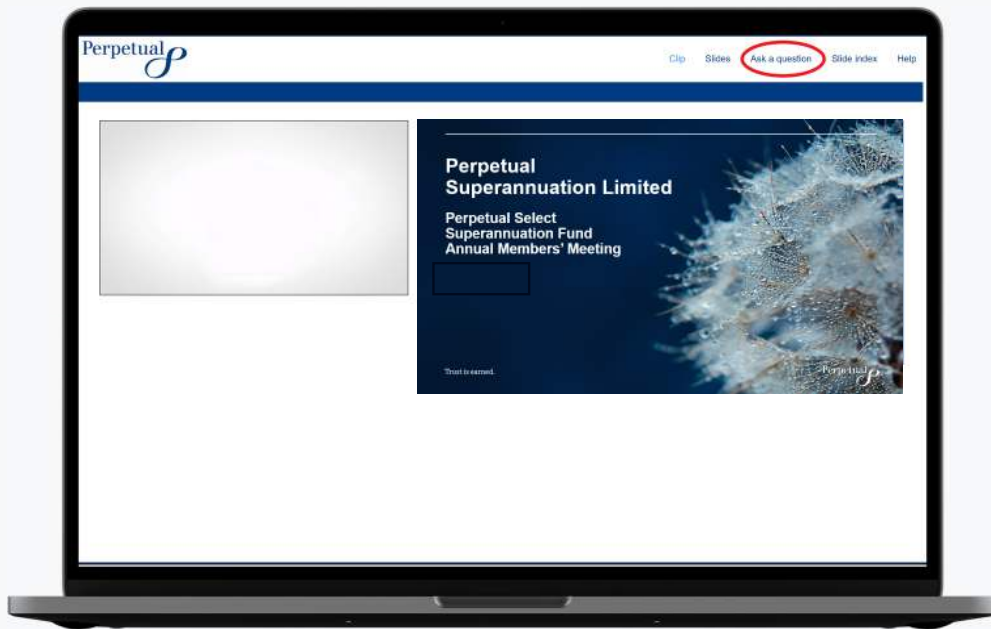
Updates:

- Markets and investment performance update
 - Member services update
-

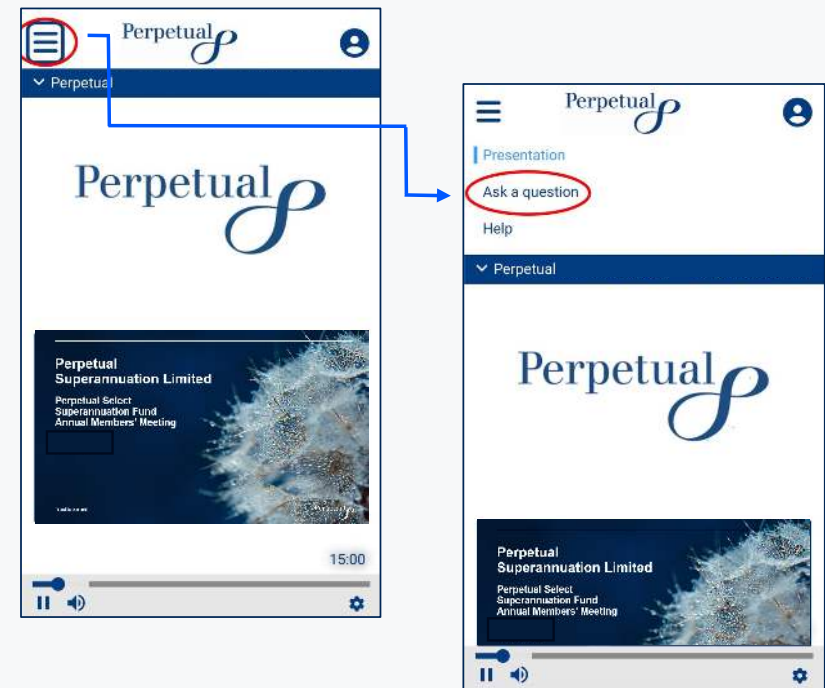
Members' questions and answers

Submit a question

Via desktop



Via mobile device



If your question relates specifically to your account, we will contact you directly to discuss. Alternatively, our Contact Centre is available to assist on 1800 003 001.

Perpetual Superannuation Limited – key executives

Governance Tier	Board	Janet Torney Chair & Non Executive Director	Kerry Adby Non Executive Director	Jocelyn Furlan Non Executive Director	Chris Green Executive Director	Mark Smith Executive Director	
	Board Committees	Audit and Risk Committee Jocelyn Furlan (Chair) Janet Torney (NED) Kerry Adby (NED)	Investment Committee Kerry Adby (Chair) Janet Torney (NED) Mark Smith (Executive Director) Jonathan Sweeney (Independent Member)	Nominations Committee Janet Torney (NED) Chris Green (Executive Director) Paul Chasemore (Chief People Officer)	People & Remuneration Committee Nancy Fox (Chair & Perpetual Ltd NED) Fiona Trafford-Walker (Perpetual Ltd NED) Greg Cooper (Perpetual Ltd NED)		
		Catherine Payne Head of Office of the Superannuation Trustee					
Operating Tier	Key Management Personnel	Sam Mosse Chief Risk and Sustainability Officer			Craig Squires Chief Operating Officer		
		Claudia Rososinski PSL Company Secretary			Annie Rozenauers Global Head of Product Governance		
					Ilias Kotronakis Senior Manager, Product & Services, Product and Marketing PP		
External Service Providers ¹	External Service Providers	State Street Custodian and Fund Administrator		Tech Mahindra Member Administration		AIA Insurer	
		KPMG External Auditor Nicholas Buchanan					

1. External service providers may be engaged indirectly via related parties

Janet Torney

Chair

Chair's address

Trust is earned.





Perpetual 

Our strategy

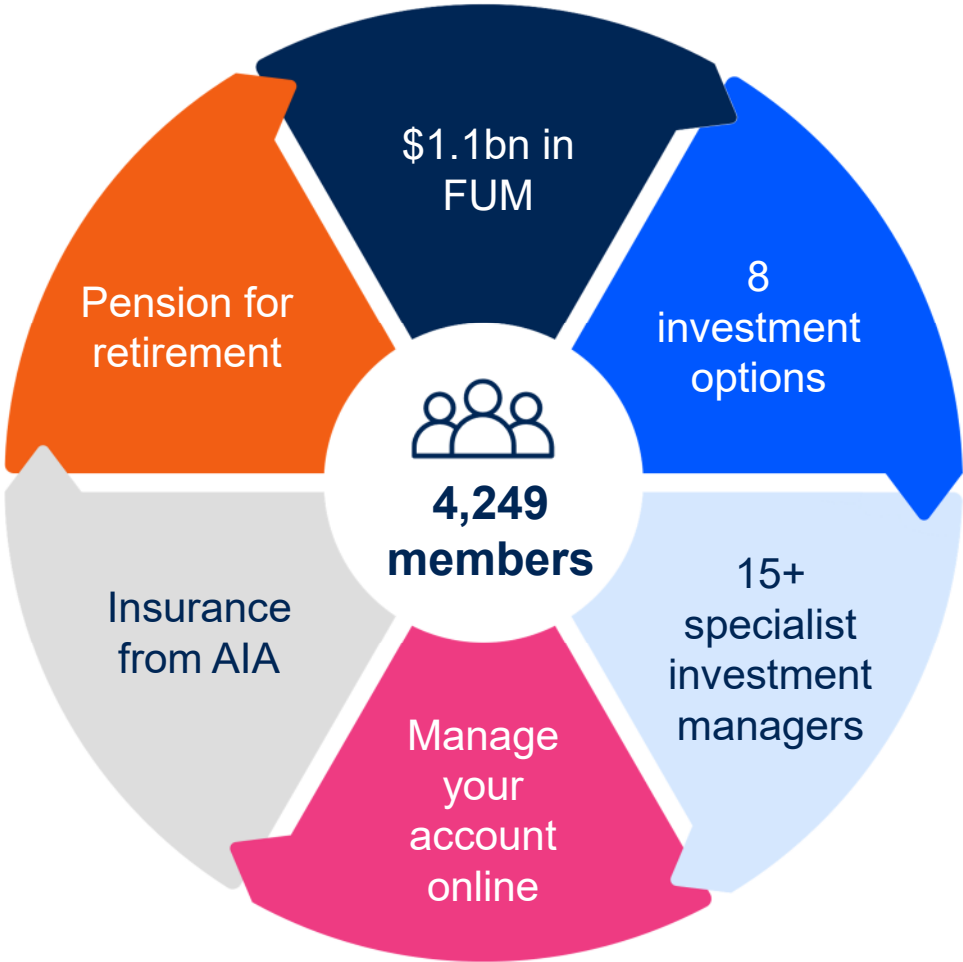
Purpose: Enduring prosperity for the lifetime of our members

Vision: to be the trusted provider of market-leading superannuation solutions in our chosen segments

Values: Excellence, Integrity & Partnership

Strategic Objectives	Enable  Enable the provision of superannuation solutions for our members and their advisers	Engage  Deepen our member relationships and improve our members experience	Protect  Protect our members by delivering robust governance, compliance & risk management	Sustain  Provide efficient and sustainable business operations
Metrics	Investment performance Investment choice Member engagement Fees			
Underpinned by our Risk Appetite Statement				

Your Fund as at 31 December 2023



Tools & Resources



Perpetual Superannuation Limited

Perpetual's Select Superannuation Fund Annual Members' Meeting

7 March 2024

Trust is earned.

Perpetual 



Kyle Lidbury

Head of Investment Research

Markets and investment performance update

Trust is earned.

Perpetual 

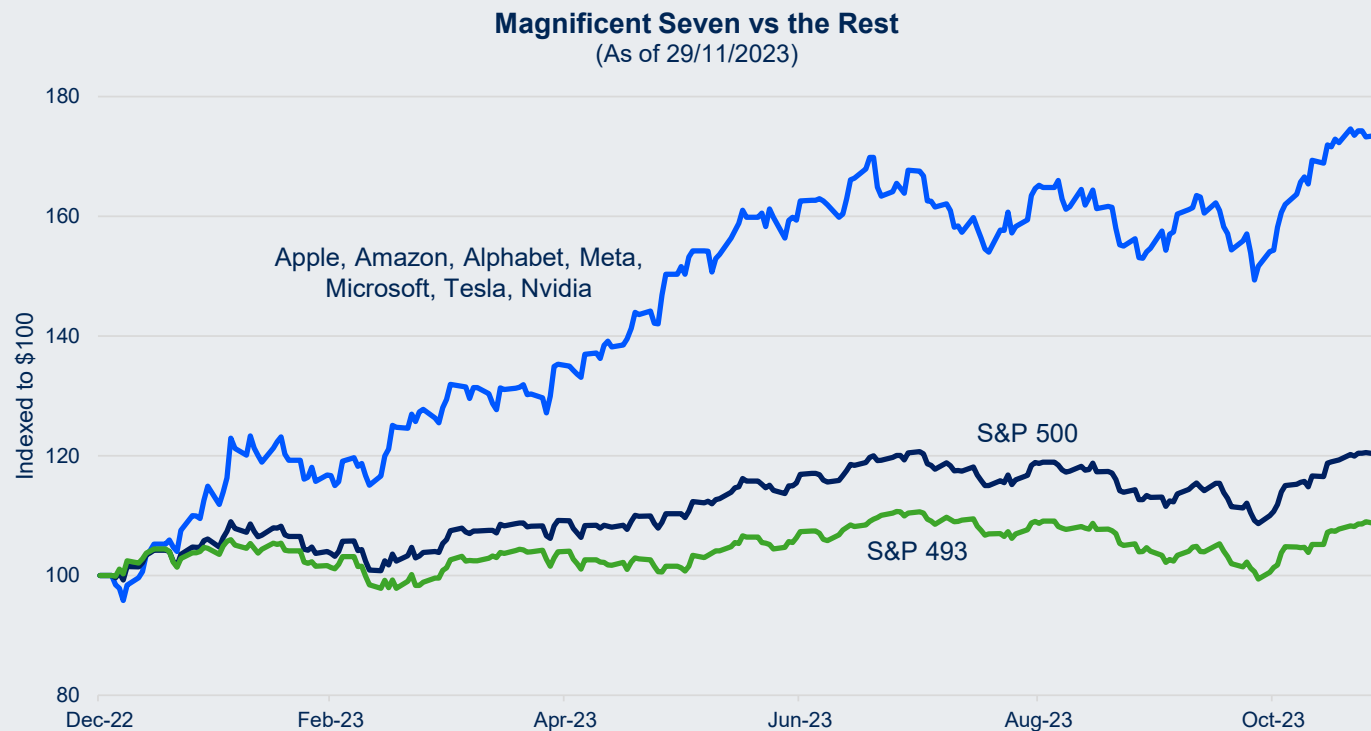
2023 Recap



-
1. **The most anticipated recession in recent memory** that didn't transpire...
 2. **Artificial Intelligence boom** had a meaningfully positive impact on market sentiment
 3. **Inflation has trended downwards** but remains above Central Bank's policy target range
 4. **Central Banks continued to hike rates aggressively** but appear to be at peak interest rates
 5. **Labour markets remained remarkably robust** throughout the year
 6. **Nominal growth and consumer spending were resilient** in the face of higher prices
 7. **The geopolitical landscape continued to be volatile and escalated**, impacting markets in the short term
 8. **China's long awaited re-opening disappointed** as the economy faced significant challenges throughout the year
 9. **A broader banking crisis was avoided** when SVB and Credit Suisse collapsed

Artificial Intelligence (AI) boom

Excitement surrounding AI manifested itself in the 'Magnificent Seven'



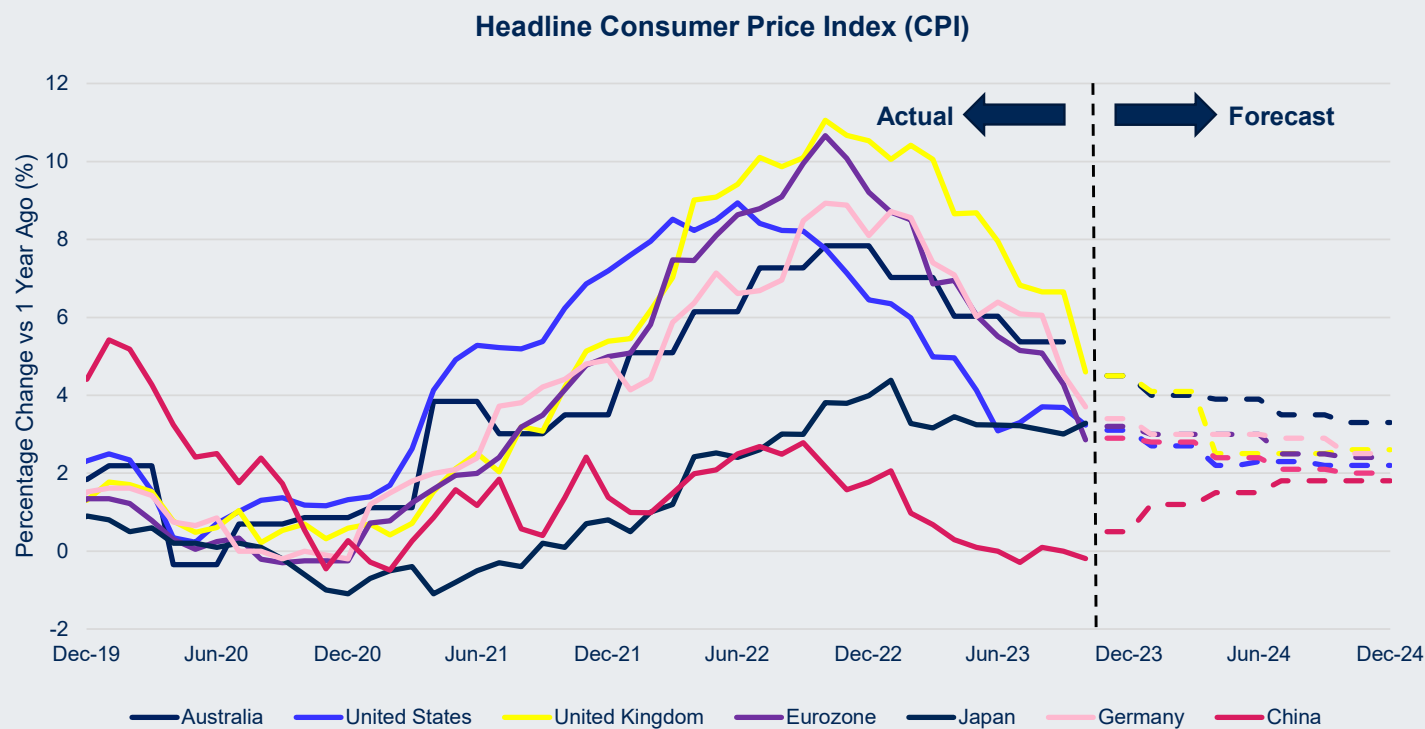
- | The recession that never came - *"Economists have predicted 9 of the past 5 recessions"*
- | Burst onto the scene when OpenAI's ChatGPT launched
- | S&P 500 performance November YTD ~ 20% but without 'Magnificent Seven' only ~8%

Source: FactSet, Returns are in USD, November 2023
Past performance is not indicative of future performance.

© 2023 Perpetual Limited. All Rights Reserved.

Inflation trended lower

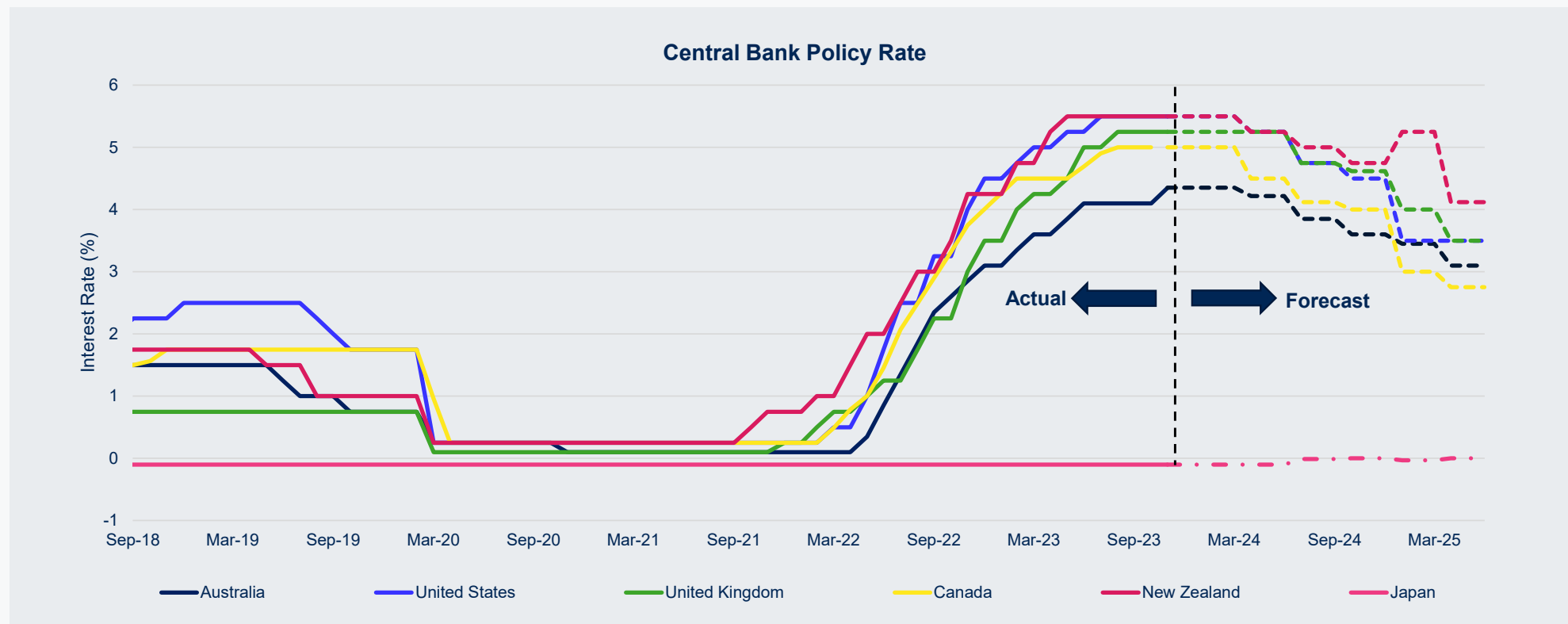
Remains above target range in most countries



Services and shelter inflation lagged for much of the year but has recently turned a corner
Should continue to trend downwards due to the lagged impact of higher rates, the 'base effect', energy prices stabilising, and supply chain bottlenecks clearing

RBA Central Bank Policy Rates moved higher

Likely at or near peak interest rates



- | RBA raised rates from 0.1% in 2022 to current level of 4.35%, Federal Reserve raised rates from 0.1% in to 5.5% (upper range)
- | Commentary from Central Bank officials is more 'dovish', implying peak (or near peak) policy interest rates

2024 Outlook



1. **Inflation likely to trend lower over the short-term**, however, structural shifts in the global economy could see inflation higher over the long-term
2. **Central Banks will keep rates ‘higher for longer’** until unemployment and economic growth materially deteriorates
3. **Geopolitical risk will remain high** and is likely to lead to more frequent conflicts of increasing consequence
4. **Labour markets will soften**, dampening consumer spending
5. **Economic growth to slow and volatility to persist**
6. **Global economy to experience a mild recession**, however, we don’t expect a repeat of the dot.com bubble or GFC
7. **Opportunities abound**, with fundamental investment analysis likely to be more strongly rewarded than recent years

Performance

Select Superannuation Plan – Multi-Asset Class Options, Net Returns, 31 December 2023

Investment options	1 yr %	3 yr % pa	5 yr % pa	7 yr % pa	10 yr % pa
Conservative	7.48%	3.00%	3.80%	3.33%	3.40%
Diversified	8.57%	4.24%	4.77%	4.10%	3.99%
Balanced	9.93%	5.40%	6.03%	5.19%	5.15%
Growth	10.90%	6.41%	7.03%	6.11%	5.96%
High Growth	12.05%	7.37%	7.91%	6.86%	6.53%

Select Superannuation Plan – Single-Asset Class Options, Net Returns, 31 December 2023

Investment options	1 yr %	3 yr % pa	5 yr % pa	7 yr % pa	10 yr % pa
Cash	3.31%	1.36%	0.91%	0.64%	0.56%
Australian Equities	11.53%	8.12%	8.04%	6.36%	6.15%
International Equities	15.65%	6.50%	10.39%	9.44%	8.67%

Investment performance has been calculated net of fees, costs and tax. Past performance is not indicative of future performance. The performance shown is for the Select Super options. The performance of the Select Pension options will differ from this for reasons such as tax.

Perpetual Superannuation Limited

Perpetual's Select Superannuation Fund Annual Members' Meeting

7 March 2024

Trust is earned.

Perpetual 



Annie Rozenauers

Global Head of Product Governance

Member Services Update

Trust is earned.

Perpetual 

Member Services - FY23



41,053 phone calls over the year, 65% answered in 30 seconds



30,465 emails over the year, 91% answered in 48 hours



Customer service scores of 8.7/10 for phone interactions



Customer service scores of 7.9/10 for email interactions

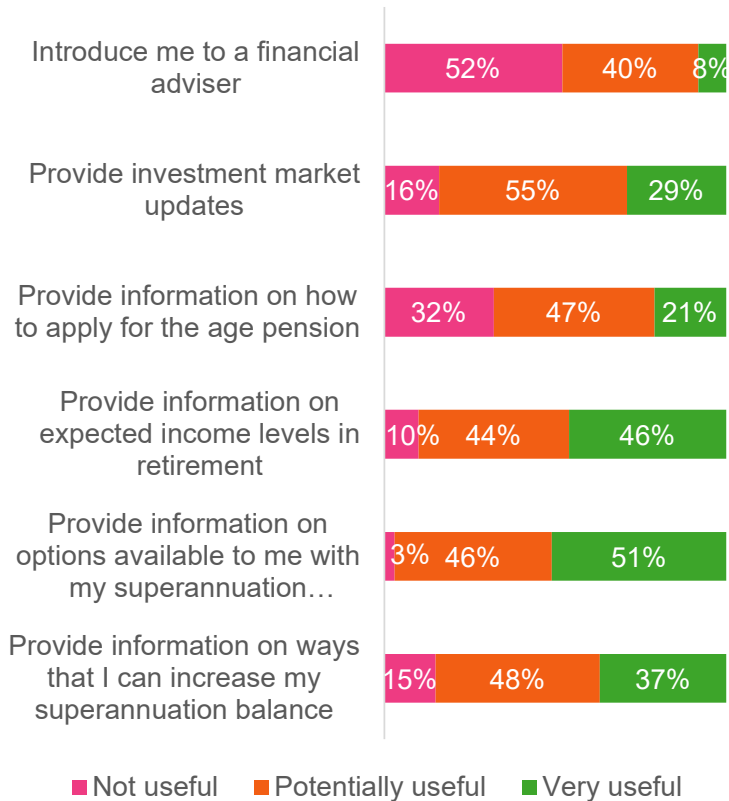
Service Performance Rated by You (out of 10)

	2023	2022	2021
Professionalism of our people	8.1	7.8	8.4
Responding quickly to your questions and requests	7.7	7.8	8.1
Being available when you call	8.1	7.8	8.0

Note: the member services statistics are for the contact centre as a whole, while the service performance rated by you is specific to the Perpetual WealthFocus Superannuation Fund

MyRetirement

Approaching retirement



Perpetual's Retirement Survey of members of the WealthFocus and Select Superannuation Funds, September 2022

The happiest of all lives is a retirement well spent

When can I retire?
We all have different views about retirement age. That means we all have different needs from retirement planning. Here are some helpful tips.
[Read the full article](#)

Will I pay tax on my super when I retire?
It's important to understand how your retirement income will be taxed, so you can make the most of your savings.
[Read the full article](#)

What can I do with my super when I retire?
For most of your life, access to your super has seemed a long way off. Now it's getting closer and there are decisions to be made.
[Read the full article](#)

How to grow your super before retirement
There are a number of practical strategies you can use to boost your super before retirement. Here are a few.
[Read the full article](#)

How worried should I be about running out of money when I stop working?
It's not unusual to be concerned about running out of money when you stop working. But there are a few things you can do to reduce stress.
[Read the full article](#)

How to grow your super after retirement
Just because you're retired doesn't mean you can't continue to grow your super nest-egg. Contributing to super can be a tax-effective way to grow your retirement savings.
[Read the full article](#)

<https://www.perpetual.com.au/asset-management/superannuation/planning-for-retirement/>

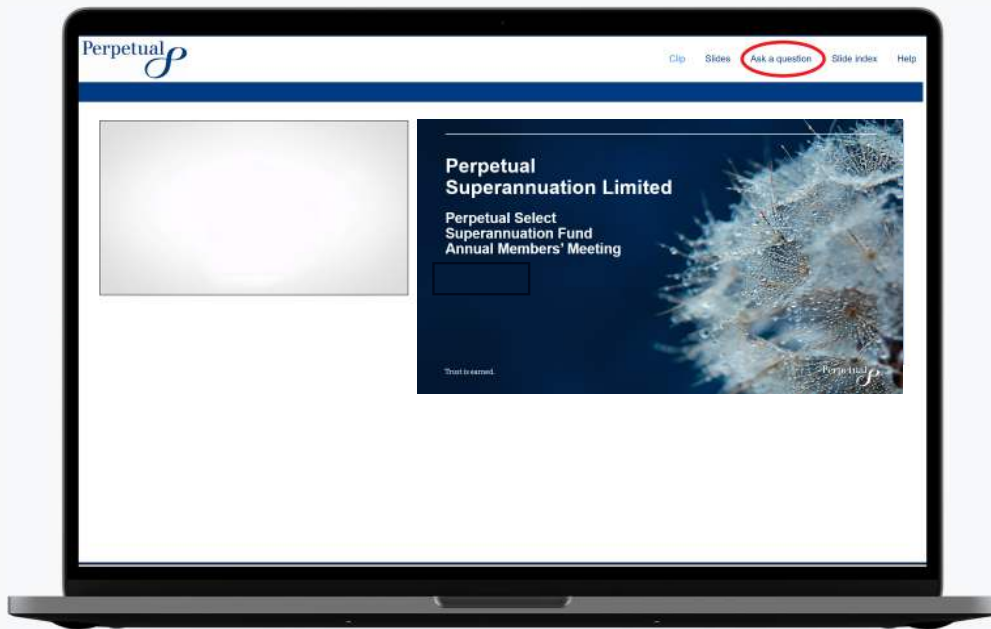
Members' Questions and Answers

Trust is earned.

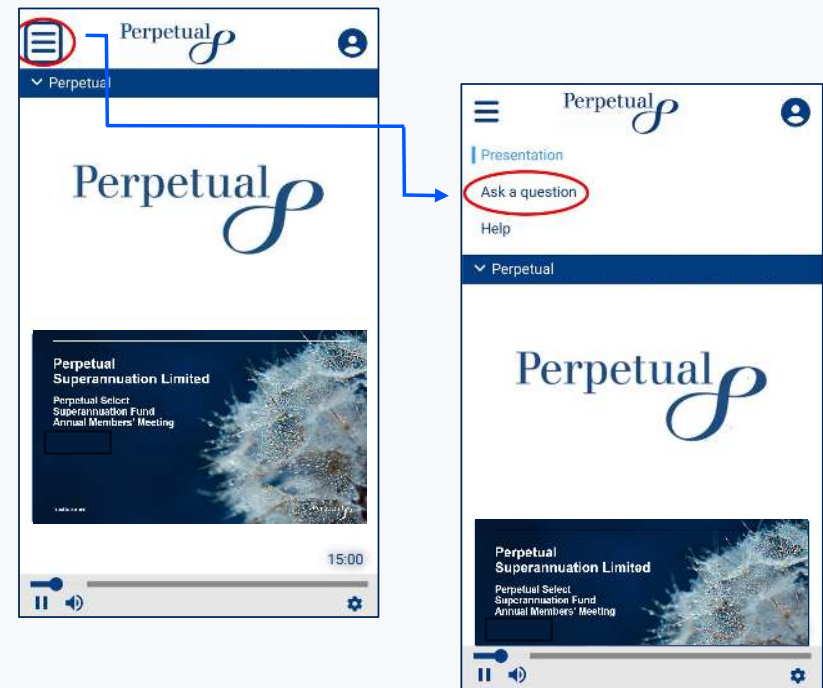
Perpetual 

Submit a question

Via desktop



Via mobile device



If your question relates specifically to your account, we will contact you directly to discuss. Alternatively, our Contact Centre is available to assist on 1800 003 001.

Thank you.

Trust is earned.

Perpetual 